

Street League and SUNEE



STREET LEAGUE

www.streetleague.co.uk

**Working together in
partnership**

Sport
Universities
north east england



- Founded in 2001 by Dr. Damian Hatton
- Structured 'Sport for Development' programme
- Transform lives through power of sport
- 2,000 disadvantaged people every year at centres in London and Glasgow
- North-East in 2009
- *"Flag ship development through football social inclusion project"* - Football Foundation

- 75% of participants engage in Directions 2 Work
- 60% secure positive outcome in either employment, education or further training
- Work in partnership with 60 organisations in London
- Founder member of Street Football World
- Named by FIFA as *“the strongest development through football organisation in the UK”*

Street League Programmes

- Street Sports
- Directions 2 Work
- Volunteering
- Progressions

Partnerships

- Homeless hostels
- Drug and Alcohol rehabilitation projects
- Probation services
- Refugee teams
- Job Centres
- Mental health services

‘Team Managers’ coordinate the organisations activities with Street League

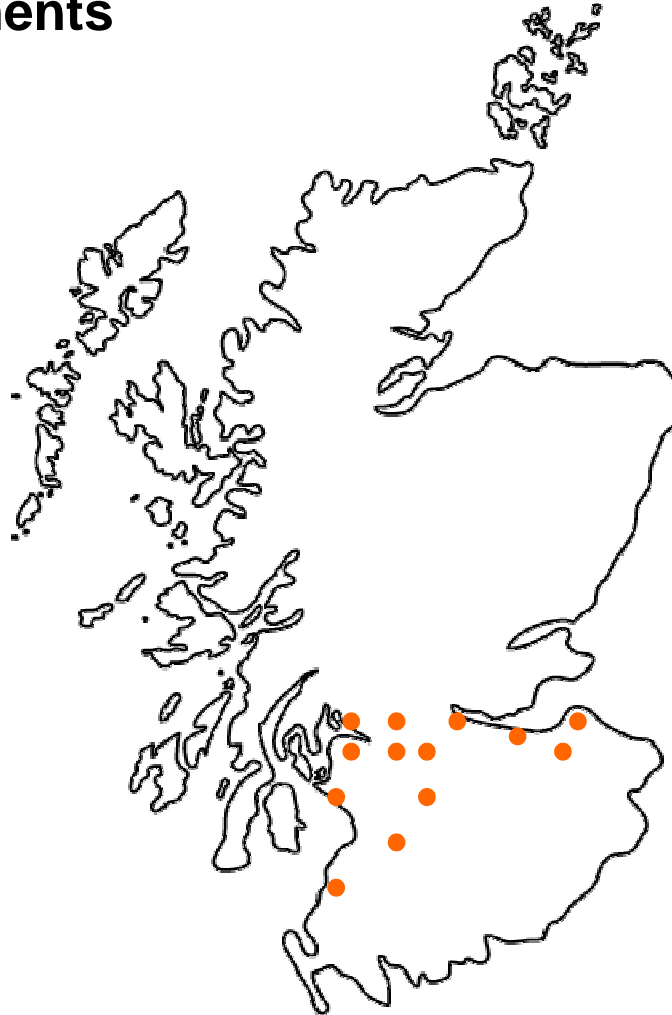
Glasgow Developments

Phase 1

- City of Glasgow
- Inverclyde
- North Lanarkshire
- South Lanarkshire
- Ayrshire

Key Developments:

- Expanded delivery capacity*



Phase 2

- 13 Local authority areas
- National Centre of Excellence



Street Sports

- A safe and inclusive environment. Focus on having fun, meeting new people, building confidence and self esteem, and improving health and wellbeing

Outreach model

Weekly football training and fitness sessions in the same place, at the same time and with the same qualified coach

Competitive monthly Matchdays and Cup Competitions

Credit Reward Scheme

Directions 2 Work

A range of personal development and education opportunities with courses ranging from 1 day to 5 weeks, both accredited and non-accredited

Theme of sport, and the opportunity to get fit, is embedded in each activity

Is a key ingredient in keeping people motivated and positive about their future

Directions 2 Work

- Goal Setting
- CV Writing
- Sport 4 Work
- Fit 4 Work
- Goals Project
- Coach
Apprenticeship
Scheme

Street League and SUNEE



STREET LEAGUE

www.streetleague.co.uk

**Working together in
partnership**

Sport
Universities
north east england

Street League

- Proven delivery model
- 8 years experience
- Outreach style of delivery
- Education and Training
- Innovation

SUNEE

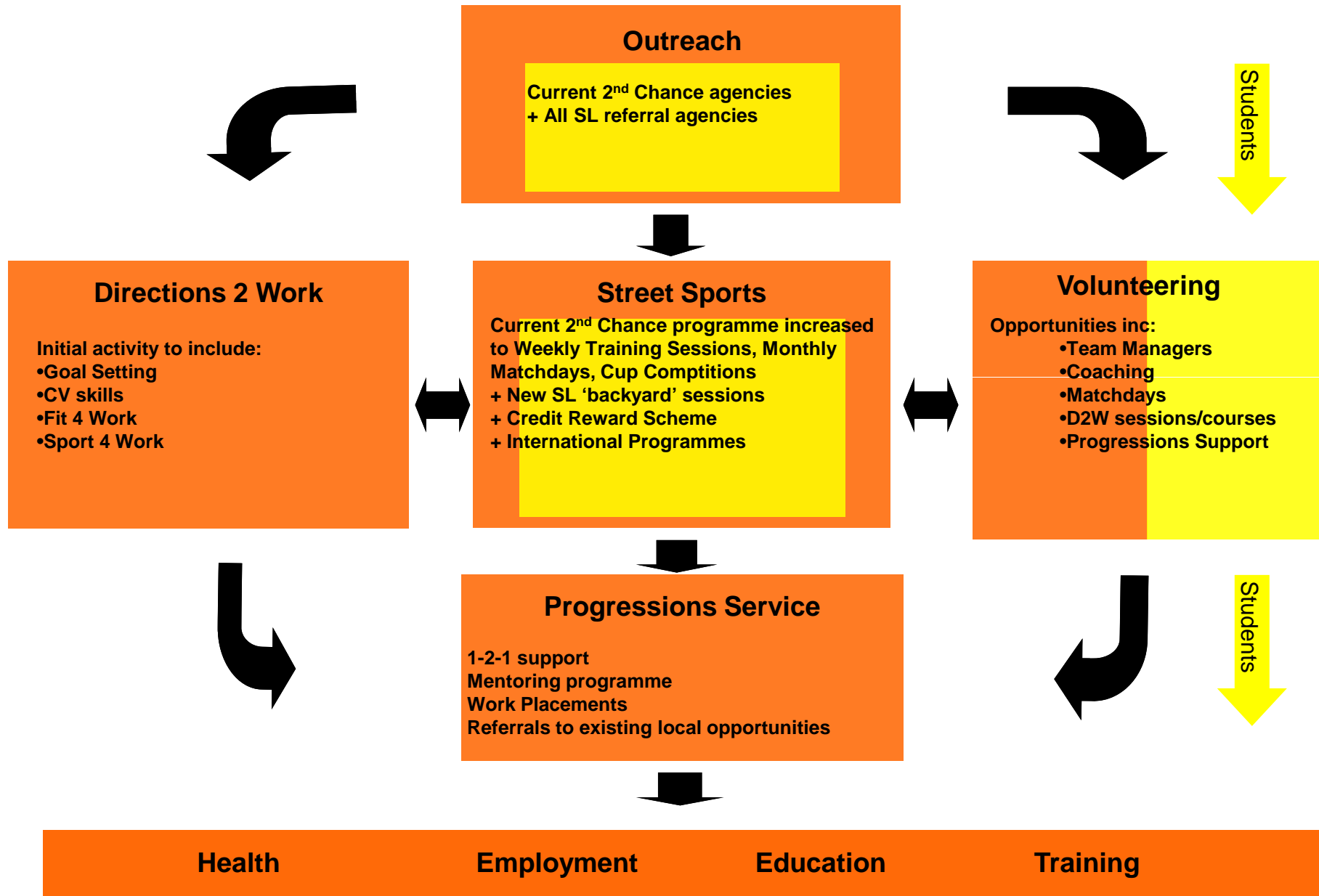
- Local reputation
- Local knowledge
- Existing partnerships
- Facilities
- Students

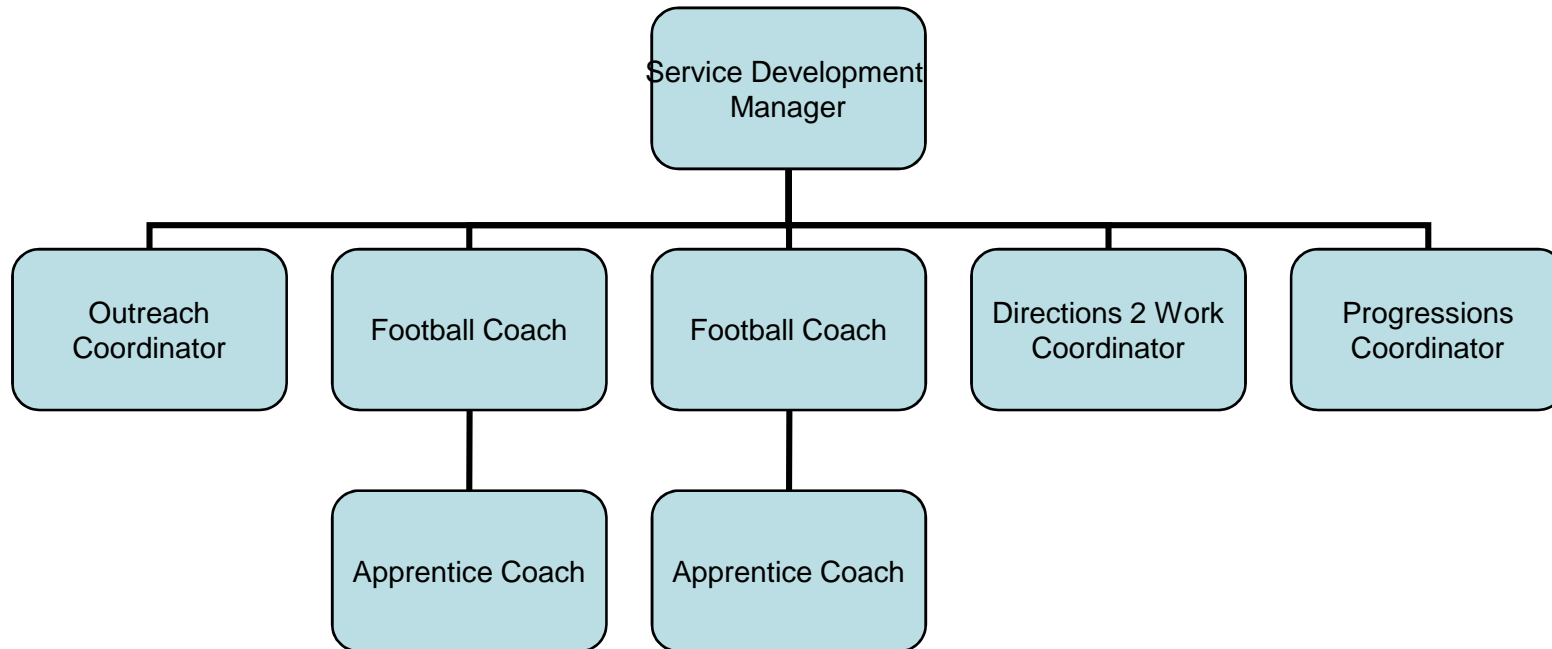
- Sustainable funding

Impact

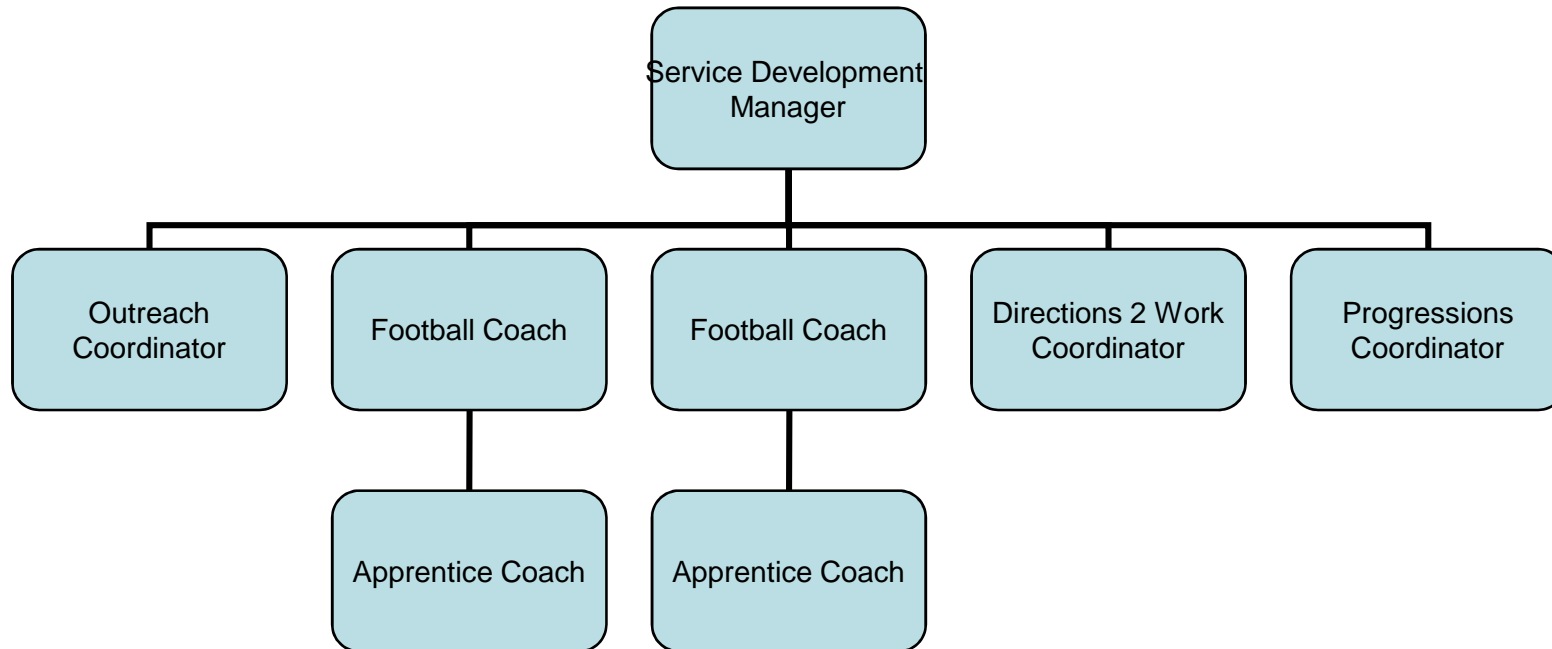
The combined delivery model will reach out across the North East from Berwick to Darlington offering high quality sports based intervention and personal development opportunities

Health, fitness and well being, crime and re-offending reduction, social cohesion, community development, education and employment

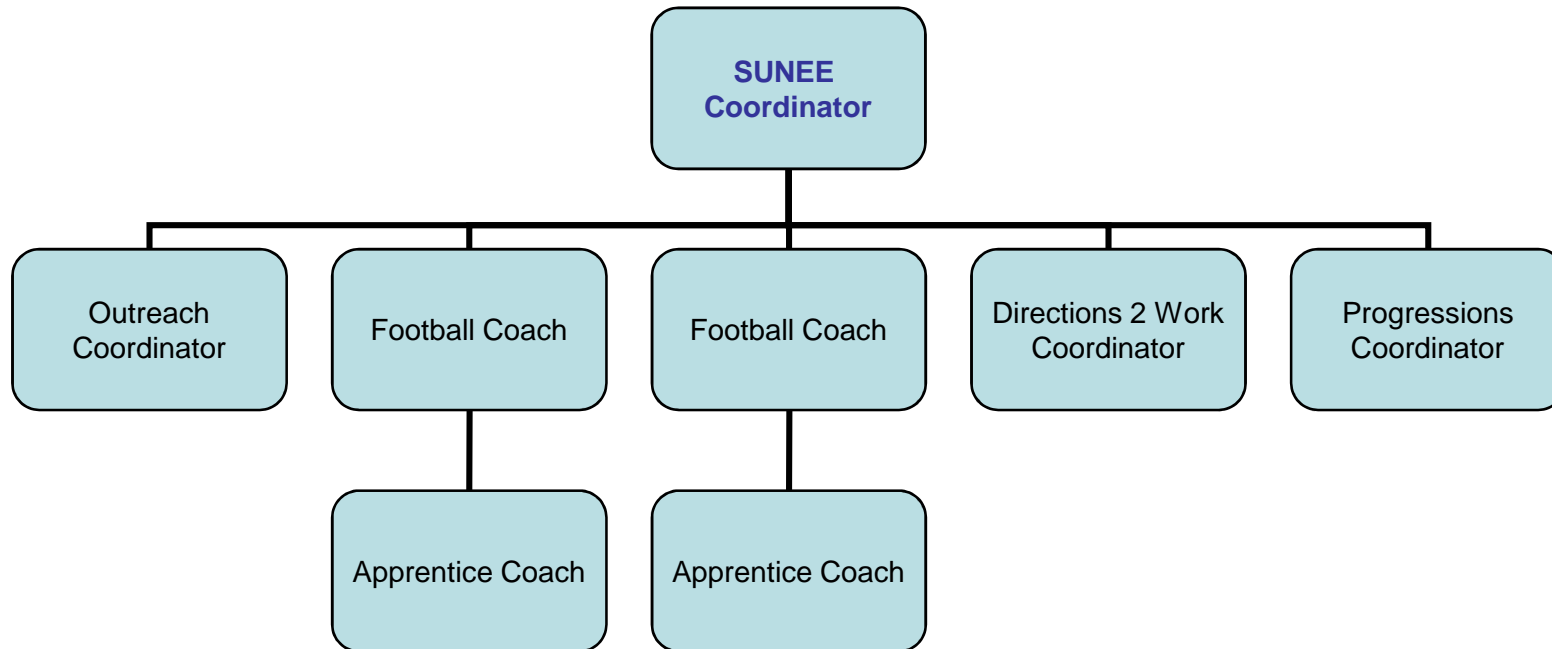




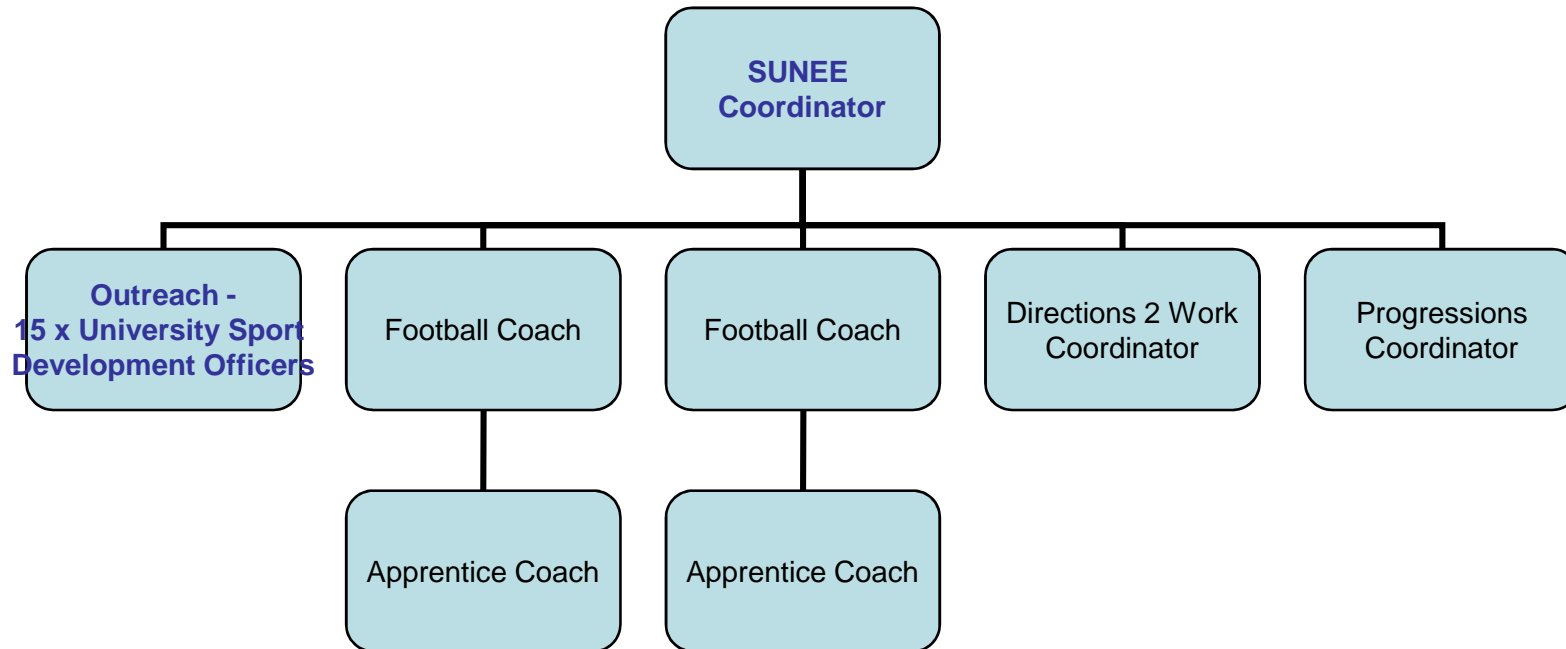
SUNEE Partnership Staffing Structure



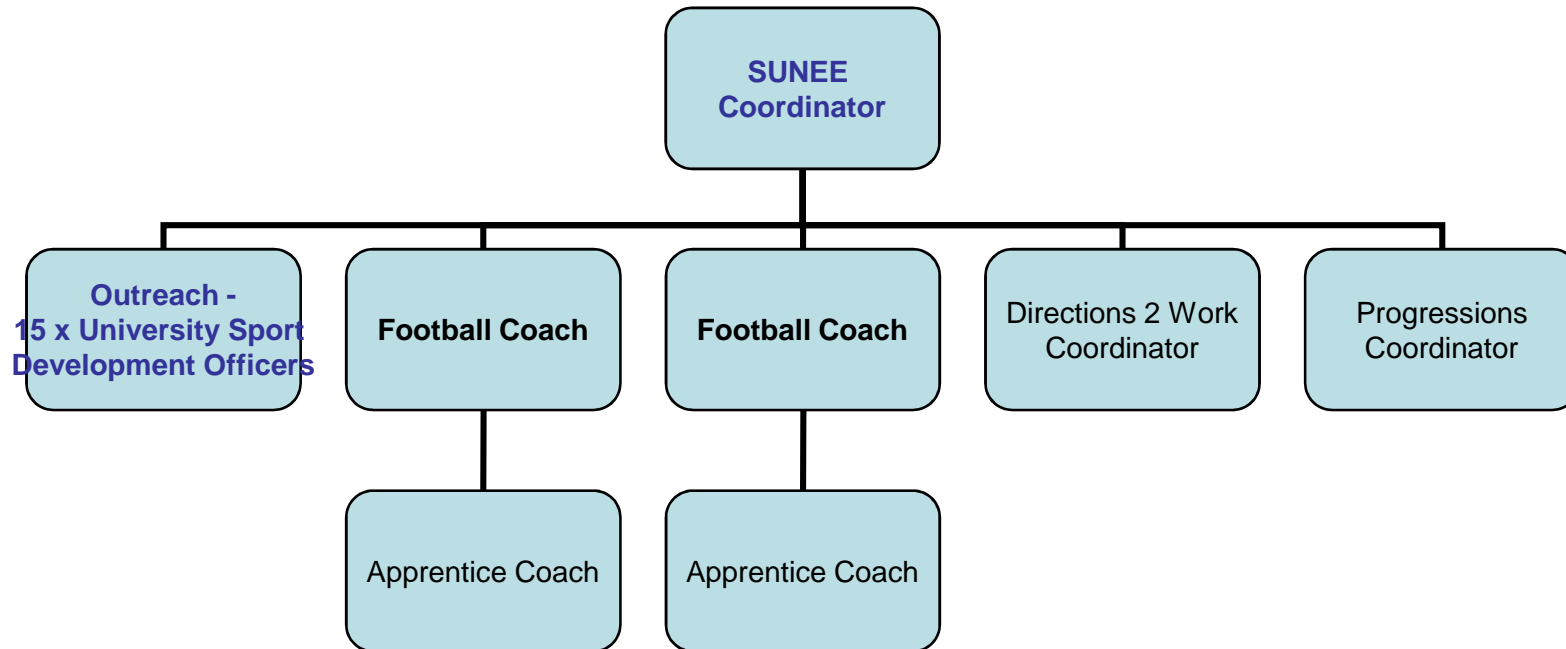
SUNEE Partnership Staffing Structure



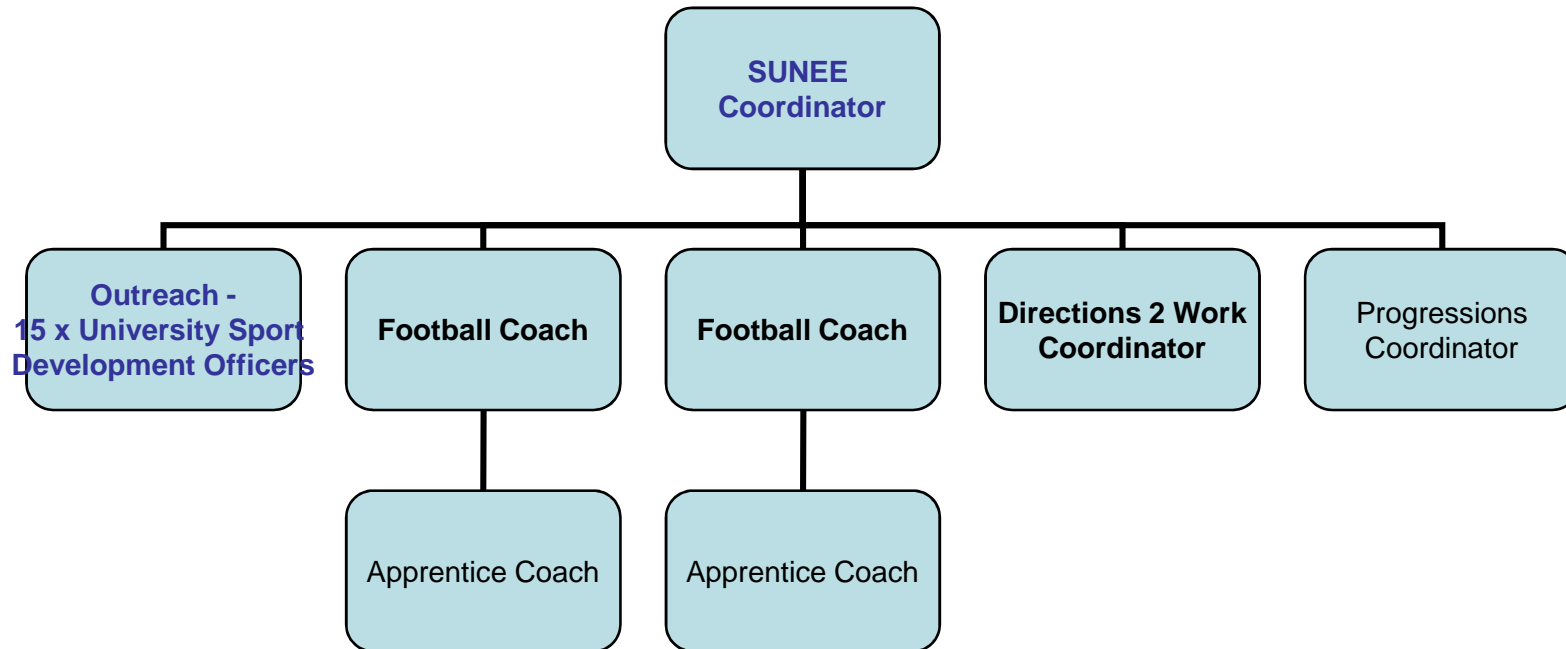
SUNEE Partnership Staffing Structure



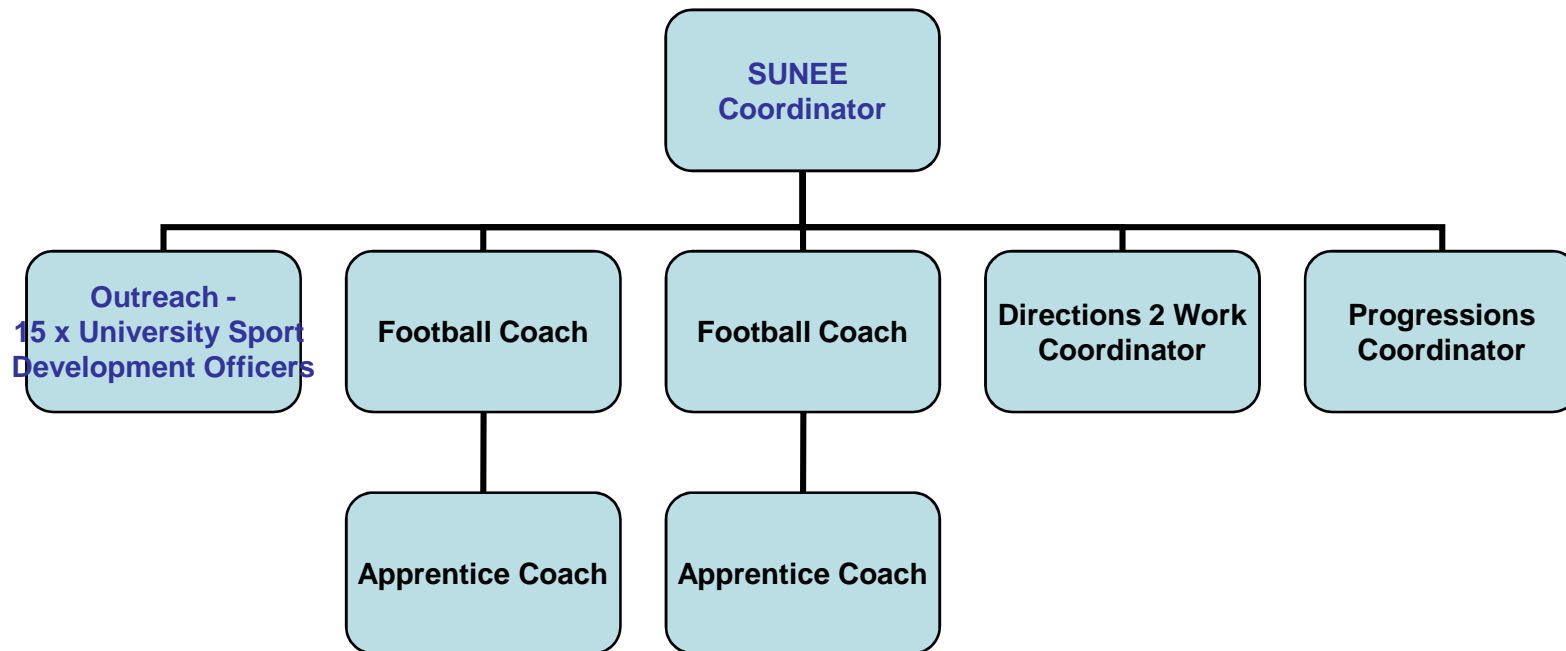
SUNEE Partnership Staffing Structure



SUNEE Partnership Staffing Structure



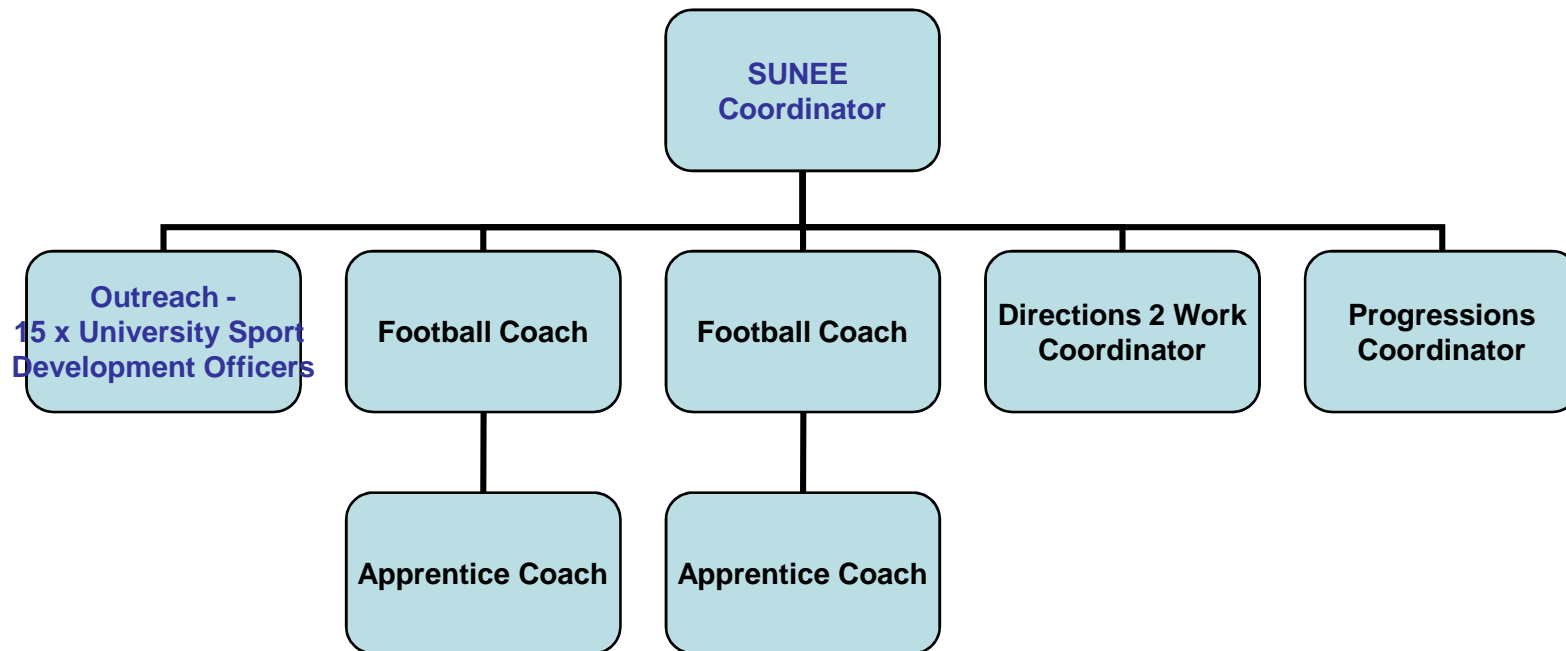
SUNEE Partnership Staffing Structure



Impact

Increase participation in existing sessions. New outreach sessions beyond universities. Activity 50 weeks of the year. Competitive regional league structure. D2W and Progressions Service.

SUNEE Partnership Staffing Structure



Impact

Health, fitness and well being, crime and re-offending, social cohesion, community development, education, skills and employment

“

At first, Street League was just a way to play football. Now I have qualifications, a job and my life is back on track. It's time to move on ”

“

People are pleased to see me and want to be around me.

Nine months ago I didn't want to be around at all ”



Contact Details

Charlie Gamble

0208 536 5330

charlie.gamble@streetleague.co.uk

Neil Hurren

0191 243 7567

neil.hurren@sportengland.org

www.streetleague.co.uk

